

Historic Cazadero Inn. 10 guests · 5 bedrooms · 5 beds · 2.5 baths

5400 Cazadero Highway, Cazadero, CA 95421

\$381

5 bedrooms, 2 full baths & 1 partial



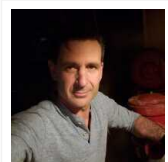
View virtual tour at:
<https://tourwizard.net/elim-grove-raymonds-bakery/>



Come and stay in a part of Sonoma County history! You'll have the house to yourself! Built around 1900, the Cazadero Inn was one of the first and only remaining buildings. It was the last stop on the Northwest Pacific Railway. Guests could take the ferry from San Francisco to Sausalito, board the train, and be dropped off at the front door! The Cazadero General Store is right next door, where you can gather anything you might need from ice cream for a hot day or local produce from Andy's Produce Market in Sebastopol.

There are tennis and basketball courts five minutes walk away as well as a small playground.

As our guests here, you are also welcome to come down to Raymond's Bakery and B&B to enjoy our creek access, gardens and campfire.



Mark Weiss

(707) 632-5335
gottabakebread@gmail.com