

3900 Savoy St , # 183, London, ON N6P0A3

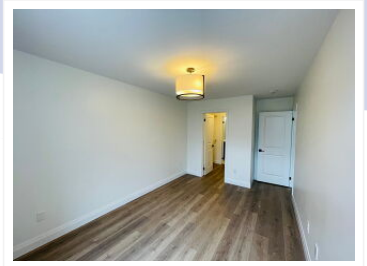
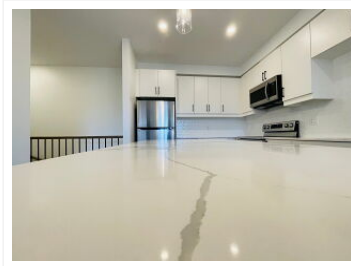
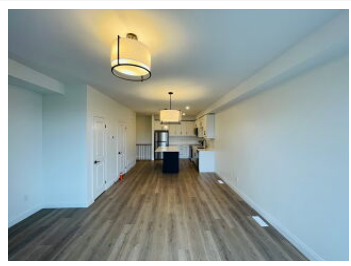
\$2,500 • Condominium • Condominium • 2 bedrooms • 2 full & 1 partial baths



View virtual tour at:
<https://tourwizard.net/f64e6668/>



Don't Miss, this newly built 2 bed and 2.5 bath stacked Townhouse near the top-ranking Lambeth public school of London. This suburb is so loved and is finally being opened up to the rental community on a larger scale. The best location for those who love to stay near green lush walking trails, 3-minute drive public school and easy drive of 2-minute to Highways 401 and 402. It also 11-minute drive to both the New Talbotville Amazon fulfillment centre & the New Maple Leaf Foods processing plant. All new brand-new stainless-steel appliances. Main floor offers a spacious family room with an oversize gazing window, an eat-in kitchen showcases crisp white cabinetry, designer backsplash, a center island, newly installed stainless-steel appliances, and tons off cabinets for storage. Lower level enjoy the master suite with a walk-in closet and ensuite features vanity with granite counters. Occupancy is available from 1st September 2022.



Ank Bohra
Realtor

(647) 766-0588
thecouplestate@gmail.com
<http://www.realestatewithank.ca>

Shrine Realty Brokrag
Real Estate Brokrag

thecouplestate@gmail.com

